



GREAT OUTDOOR WEEKEND IN

THREE VALLEY CONSERVATION TRUST SERVICE AREA

Saturday, September 22

A Celebration of Our Community's Contributions to Conservation

WALK & TALK SCHEDULE



9:00 A.M AND 3:30PM

Three Valley Conservation Trust Office

THE BECK FARM

5920 Morning Sun Road, Oxford, OH.

Start the morning with a walk through the conservation area of the Beck farm, or end your day at this lovely area just north of the city of Oxford.

THREE LOCATIONS FOR WALKS AND TALKS - 10:30 A.M. 12:30PM AND 2:30

Visit all three to enjoy the wonderful natural areas that are being conserved in our community.

THE EDGE OF THE FARM CONSERVATION AREA, 5398 McCoy Road

Edge of the Farm Conservation area was founded in 2007. Located south of Oxford, the conservation area is planted in tall and short grass prairies and has 5 wetlands. Hays Cummins will lead a tour of the preserve on the trails across the prairies, wetlands and woods emphasizing important ecological functions along the way.



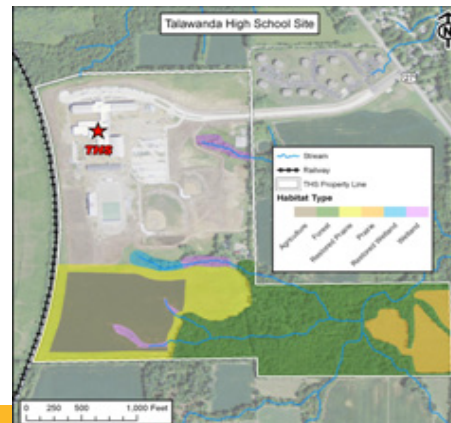
INDIAN CREEK NATURE PRESERVE, 2550 Indian Creek Road

This 200-acre farm is part of over 1000 nearly-contiguous acres of permanently protected land along Indian Creek 5 miles south of Oxford. The varied topography ranges from moist slopes on the western side (site of horse rustlers' hidden corrals in 1805-1815) that support bluffs of shooting stars and ravines with showy orchis. On the higher and dryer eastern side across the creek, an 11 acre tall grass prairie replaced an upper non-productive soybean field in 2007 and 10 acres of savannah were added in 2007, planted in burr and chinquapin oak last year. You'll be able to see a 5 acre plot sprayed

for invasives prior to seeding in native grass and forbs this winter. With recent rains, we can hope for late-blooming asters and butterflies as well as some refilling of 3 wetland ponds heavily used by red-winged blackbirds in summer and amphibians all year. Ascent to the upland tall-grass prairie is moderately steep (but transportation can be provided) but it is level on top. Restroom and refreshments available.

TALAWANDA HIGH SCHOOL NATURAL AREA, 5301 University Park Blvd.

The new Talawanda High School building is situated on 147 acres of unused, undisturbed land comprised of wetland, prairie, deciduous forest, and agricultural habitats. Science Instructional Leader for the Talawanda School District and ESI President, Jeff Winslow has worked with students at the High School and Miami University to create a trail system for environmental education. Come and see this wonderful outdoor preserve in our neighborhood.



For more information, call 513-524-2150

email woyhazs@muohio.edu

www.3vct.org